



FALL PROTECTION FOR REHAB

PRODUCT INFORMATION



CONTACT

ADDRESS

Solo-Step Inc.
310 North Derby Ln. #1991
North Sioux City
South Dakota 57049

PHONE & FAX

Toll Free: (866) 631-1117
Kevin: (605) 310-1655
Fax: (605) 610-1092

ONLINE

Email: kevin@solostep.com
Website: www.solostep.com
Facebook: [@solostep](https://www.facebook.com/solostep)
Instagram: [@solosteprehab](https://www.instagram.com/solosteprehab)





HOW COSTLY IS A PATIENT FALL FOR YOUR FACILITY?

A patient fall could be extremely costly for your facility, and fall prevention is key to patient health and the achievement of better patient outcomes. Adding a safety overhead system like the Solo-Step can add value to your facility, while reducing costly falls.

1. Reduce the chance of injury to your patients, and therapists
2. Help your patients rehab more effectively and efficiently
3. Expand your ability to help patients who may require more assistance
4. Increase productivity with a 1:1 patient/therapist treatment ratio



SOLO-STEP OVERVIEW

The Solo-Step Fall Protection Track & Balance System consists of a heavy-duty extruded aluminum track. Users wear a harness which attaches to a 360-degree swivel lanyard that connects to a high-performing trolley. The trolley inserts into the track allowing patients to move along the track as needed. The Solo-Step System increases safety and provides confidence which allows the patient to focus on their rehab instead of the fear of falling.

PRODUCT PREMISE

The Solo-Step fall prevention system provides for a safe patient handling environment.

- Protects the patient from falling and the therapist from injury
- Removes the fear of falling so the patient can focus on rehabilitation
- Helps patients increase intensity level and recover faster
- Patients attempt more challenging activities
- Patients enhance functional outcomes and increase quality of life





FACILITY BENEFITS

- Add more challenging patients
- Cost effective
- Takes up no floor space
- May be used with other therapeutic devices
- Maximizes billable hours
- Increase productivity with a 1:1 treatment ratio
- Reduce/Eliminate liability risks associated with falls
- Provide a safer environment for both patients and therapists

DIFFERENT USES

- Treadmills
- Stationary Bikes
- Balance Machines
- Balance Boards
- BOSU Balls
- And more





THERAPIST BENEFITS

- Effective PT integration because of its ease of use and simplicity
- Reduce the risk of injury or strain associated with protecting patient falls
- Step away from your patient and view total body alignment without worrying about them falling
- Challenge your patient to reach higher levels of rehabilitation in less time



PATIENT BENEFITS

- Promotes confidence
- Eliminates the fear of falling
- Ability to regain strength and stability faster
- Promotes safe rehabilitation environment
- Enables patients to challenge themselves with advanced therapies
- Safety from any fall related injuries



SERVING THESE PATIENTS

- Post Hip Surgery
- Post Knee Surgery
- BPPV
- Geriatrics
- Closed Head Injury
- Active Elderly
- Parkinson's
- Alzheimer's
- Meniere's Disease
- Elderly
- Amputee

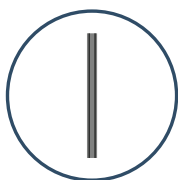
WITH THESE CONCERNS

- Too scared
- Too weak
- Too unbalanced
- Can't walk
- Too disoriented
- Too stiff
- Too unstable
- Too tired
- Too dizzy
- Too frail
- Too uncoordinated

FULLY CUSTOMIZABLE SYSTEMS

OVERHEAD TRACK SECTIONS

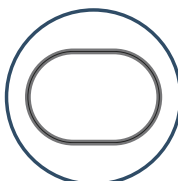
- Fully customizable to fit your budget & facility space
- Minimal pictures & measurements needed to provide quotes
- Team of dedicated workers available to guide you through the process from start to finish
- Wide track base allows freedom of movement and natural gait pattern
- Overhead design idea keeps your space free of clutter



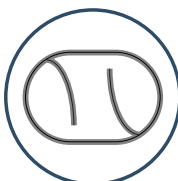
STRAIGHT TRACK



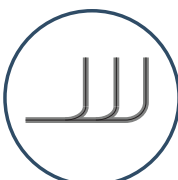
J-SHAPED TRACK



OVAL TRACK



OVAL TRACK WITH
CROSSOVER



W-SHAPED TRACK



MORE OPTIONS





RETURN ON INVESTMENT

- 1:1 patient to therapist ratio
- Physical therapists can spend time helping other patients or assisting with other tasks throughout your facility
- Increased number of patients
- Patients feel more secure and are able to increase their workout duration
- Patients are more comfortable and confident in their ability to rehab safely and effectively
- Ability to help more challenging patients based on their condition
- Decrease in the risk of liability if a patient falls
- Your therapists and patients are protected against costly injury



CUSTOMIZED MARKETING MATERIALS

With the purchase of your new safety overhead system, you will receive:

- 1. A customized brochure
- 2. A customized postcard
- 3. A customized video

Using these customized materials enable facilities to gain more referral networks and attract new patients.

Receiving these customized marketing materials in digital form allows for unlimited usage.

BROCHURE

YOUR LOGO HERE

Company Name
123 A Street,
City, State, Zip
Phone Number
Your Website Information

"I have been using Solo-Step with a variety of patients in my clinic. I have one patient who was terrified to ambulate alone and this is really impairing his function at home. He was using a wheelchair for mobility. After three sessions on the Solo-Step, he increased his confidence and ambulatory distance from 30 feet to 60 feet and was able to discontinue use of the wheelchair in his home."

Ruth Scott, PT/MSS

"Solo-Step needs to be in every rehab center in America. I was paralyzed from the waist down when I was 21 years old. Doctors told me I would never walk again. After six months in the hospital, over 20 surgeries, and many months of physical therapy, I took my first step! The scariest thing in life was taking those first steps. For able-bodied people, falling is not a big deal or something to fear, but for someone who has been injured or has some medical condition that leaves them unable to walk, it is one of the scariest things they ever face. I wish I would have had the Solo-Step earlier on in my therapy."

Bret Merkle, Solo-Step Patient

solostep
FALL PROTECTION FOR REHAB
solostep.com

solostep
FALL PROTECTION FOR REHAB
solostep.com



POSTCARD

solostep
FALL PROTECTION FOR REHAB



TAKE THE RISK AND FEAR OUT OF REHAB

THE SOLO-STEP OVERHEAD SYSTEM

- Allows for a Safe Patient Experience
- Eliminates the Risk of a Fall During Rehab
- Increases Patient Confidence
- Speeds up Recovery Time
- Restores Normal Movement and Function
- Improves Balance and Coordination
- Increases Range of Motion

PATIENT TYPES THAT HAVE SEEN DRAMATIC IMPROVEMENTS BY USING THE SOLO-STEP SYSTEM

DIZZINESS | BALANCE ISSUES | WEAKNESS | AMPUTATIONS
PARKINSON'S DISEASE | PARALYSIS | STROKE
TRAUMATIC INJURIES | HEAD INJURY | MUSCLE CONTROL



INSTALLATION

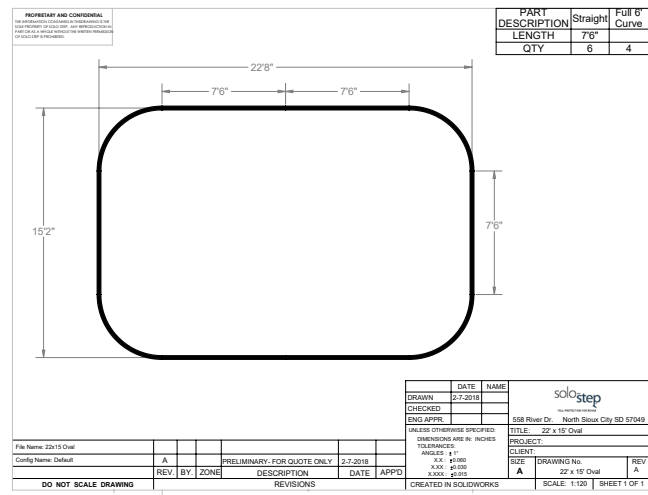
- Solo-Step can install the track system in virtually any ceiling type
- Detailed instructions will be emailed to obtain structural information for installation pricing & required materials
- Our installation professionals will require a sign-off prior to installation & upon completion of installation to confirm track is being installed in your desired location

PLANNING PROCESS

- Review pictures & measurements needed to provide quotes for the best system option for your facility
- Sign quote to begin ordering process
- Verify contacts & address for shipping and installation
- Schedule installation date with facility
- Payment for installation is due at the time of installation
- Upon arrival of installation crew- Main point of contact will need to be onsite & required to sign off on placement of track prior to any work performed
- Upon completion of installation, the main point of contact will be required to sign off on deflection tests & system installation
- System installation times vary by system size, shapes, and building structure
- Most common systems are installed in 6-8 hours

PROVIDED DRAWINGS

When needed, our team will provide detailed drawings of your overhead track section.





HIGHLY RECOMMENDED



JONATHAN LOWRY

Facilities Operations Manager
PT Solutions
Smyrna, Georgia

Since having Solo-Step installed, we have utilized the product from day one. Not only has it helped with day to day operations, but also with our clinical research programs. Solo-Step has been nothing but a pleasure to work with, from quote to installation. The Solo-Step team and installers are second to none! I highly recommend Solo-Step!



JOSHUA DAVIS

President/Owner
First Step Physical Therapy
Roswell, Georgia

Solo-Step has given our patients the confidence they need during their balance and gait training. Great equipment and very easy company to work with.



JUSTIN KUNTZE

Licensed Prosthetist/Orthotist
The Falk Prosthetics
Delray Beach, Florida

I have used Solo-Step for years to treat a variety of my patients and have had great success! They are easy to use and are durable. I highly recommend trying.



MOLLY GANOW

Director of Rehab
Azria Health
Sioux City, NE

You're able to provide therapy at a lower cost, because with the Solo-Step you just need one therapist. It's less lifting for the therapist and less strain on their back. The Solo-Step is just so much more functional and I think patients see that, and that's why they want to come here.



CONTACT

ADDRESS

Solo-Step Inc.
310 North Derby Ln. #1991
North Sioux City
South Dakota 57049

PHONE & FAX

Toll Free: (866) 631-1117
Kevin: (605) 310-1655
Fax: (605) 610-1092

ONLINE

Email: kevin@solostep.com
Website: www.solostep.com
Facebook: [@solostep](https://www.facebook.com/solostep)
Instagram: [@solosteprehab](https://www.instagram.com/solosteprehab)

solo-step



CONTACT

ADDRESS

Solo-Step Inc.
310 North Derby Ln. #1991
North Sioux City
South Dakota 57049

PHONE & FAX

Toll Free: (866) 631-1117
Kevin: (605) 310-1655
Fax: (605) 610-1092

ONLINE

Email: kevin@solostep.com
Website: www.solostep.com
Facebook: [@solostep](https://www.facebook.com/solostep)
Instagram: [@solosteprehab](https://www.instagram.com/solosteprehab)

solo[™]step